

## TYPE-EXAMINATED

0,63 m/s and 1,00 m/s

MINIMAL TRANSVERSE EXPANSION

MAXIMUM ENERGY ABSORPTION

TROPICAL CLIMATE

SAFETY COMPONENT

EXPERIENCE

RELIABILITY

**Diepocell BM<sup>®</sup>**  
**lift buffers**  
**D-series**

MAINTENANCE-FREE

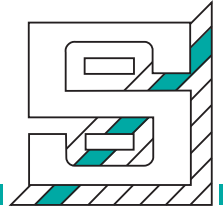
CLIMATE CHAMBER TESTED

**EN 81 - 20 / -50**



certified according to  
EN 81 - 20 / -50

# P+S Polyurethan-Elastomere



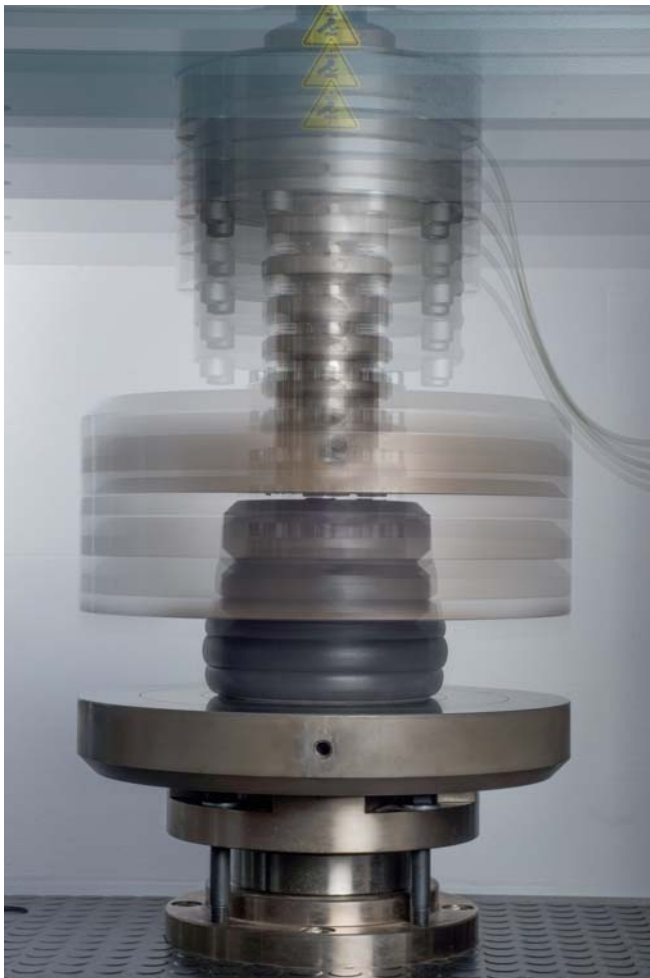
Our new generation of maintenance-free safety buffer made of Diepocell BM<sup>®</sup> was optimally adjusted according to the new EU standard EN 81-20 / -50.

They impress with a strong damping, as well as by high energy absorption with large load ranges. Due to their minimal rebound, certification to the new standard EN 81-20 / -50 could be carried out already in July 2015th. In addition to the new standard, the buffers are also certified according to the old standard EN 81-1 / 2.

P+S buffers have always been preferred in the elevator and crane industry. The new D series blends seamlessly into this reliable product-family of buffer elements.

Even the use in areas with increased humidity, as well as tropical areas is not a problem for our D series buffer.

**Even with extreme load, Diepocell BM<sup>®</sup> lift buffers show convincing results due to extraordinary material features.**



## The profile of properties

- excellent damping characteristics
- high volume compressibility with minimal transverse expansion
- wide range of permissible loads
- good resistance to ozone as well as ultraviolet and energyrich radiation
- temperature range -30°C to +80°C
- hydrolysis resistant
- all current fixing variants available

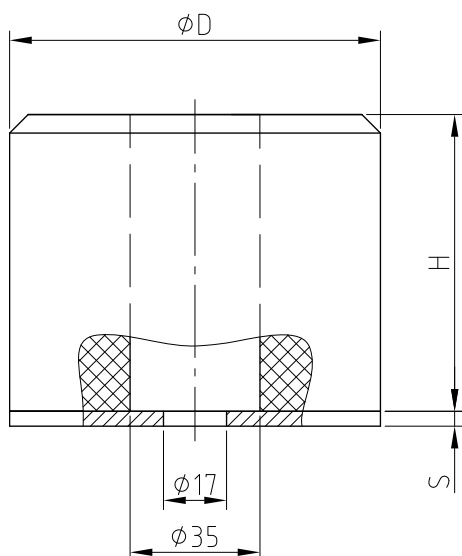
# Lift buffers from Diepocell BM®



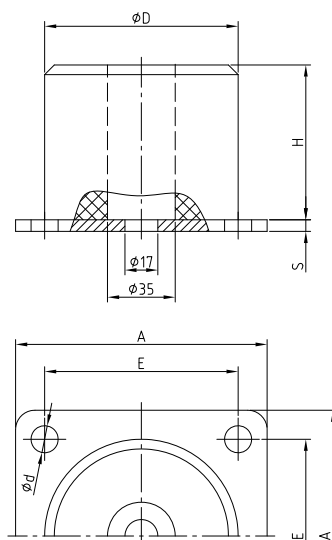
## Buffer type and item numbers

| Series |                             | Version A<br>with round<br>steel plate |           | Version C<br>with square steel plate |                  |                  |                  | Version D<br>with integrated<br>metal insert |           |
|--------|-----------------------------|--|-----------|--------------------------------------|------------------|------------------|------------------|--|-----------|
| Size   | Dimensions<br>D x H<br>(mm) | S (mm)<br>+1,0                         | item No.  | A (mm)<br>+/-1,0                     | E (mm)<br>+/-0,5 | d (mm)<br>+/-0,5 | S (mm)<br>+/-0,5 | item No.                                     | item No.  |
| D 0    | 80 x 80                     | 4                                      | 211800074 | -                                    | -                | -                | -                | -  | 211800774 |
| D 1    | 100 x 80                    | 4                                      | 211801074 | 130                                  | 100              | 14               | 6                | 211801174                                    | 211801774 |
| D 2    | 100 x 80                    | 4                                      | 211802074 | 130                                  | 100              | 14               | 6                | 211802174                                    | 211802774 |
| D 3    | 125 x 80                    | 4                                      | 211803074 | 155                                  | 125              | 18               | 6                | 211803174                                    | 211803774 |
| D 4    | 140 x 80                    | 4                                      | 211804074 | 180                                  | 140              | 18               | 6                | 211804174                                    | 211804774 |
| D 5    | 165 x 80                    | 6                                      | 211805074 | 205                                  | 165              | 18               | 6                | 211805174                                    | 211805774 |
| D 6    | 220 x 80                    | 6                                      | 211806074 | 260                                  | 220              | 18               | 6                | 211806174                                    | 211806774 |

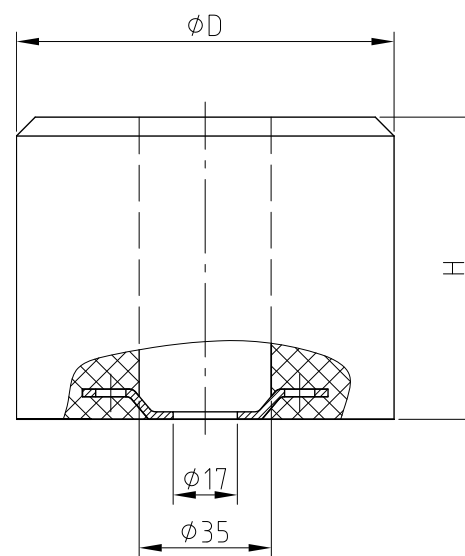
Design Type A



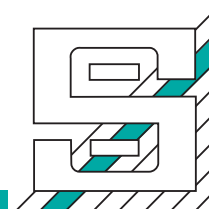
Design Type C



Design Type D



# Lift buffers from Diepocell BM®



The type tests for **P+S-lift buffers** made of Diepocell BM® were carried out to the Lift Directive **2014/33/EU**.

Certified according to:

- EN 81 – 1+2:1998+A3:2009
- EN 81 – 20 / - 50 : 2014

Certification Body:  
TÜV NORD CERT GmbH  
Langemarckstr. 20  
D-45141 Essen

The **certificate number** records the permissible load ranges for every type of lift buffer. On request, an **EU type-examination** test certificate can be provided for every type of lift buffer. P+S lift buffers are available ex stock or at short notice.

For lifts with lower speeds than the nominal speed used for the EU type-certification ( **$VN_{max.}$** ), the load range is applicable if the maximum car or counterweight loads are within the  **$m_{max.}$**  and  **$m_{min.}$**  load (kg).

| Size | Dimensions    |             | TÜV ID-Number     | Normal speed v 0,63 (m/s) |                 | Normal speed v 1,0 (m/s) |                 |
|------|---------------|-------------|-------------------|---------------------------|-----------------|--------------------------|-----------------|
|      | Diameter (mm) | Height (mm) |                   | $m_{min.}$ (kg)           | $m_{max.}$ (kg) | $m_{min.}$ (kg)          | $m_{max.}$ (kg) |
| D 0  | 80            | 80          | 44 208 12 1262 03 | 150                       | 1200            | 180                      | 600             |
| D 1  | 100           | 80          | 44 208 12 1262 05 | 200                       | 1500            | 220                      | 700             |
| D 2  | 100           | 80          | 44 208 12 1262 06 | 250                       | 3200            | 330                      | 1250            |
| D 3  | 125           | 80          | 44 208 12 1262 07 | 500                       | 5200            | 600                      | 1850            |
| D 4  | 140           | 80          | 44 208 12 1262 08 | 320                       | 4000            | 450                      | 1500            |
| D 5  | 165           | 80          | 44 208 12 1262 09 | 600                       | 7500            | 650                      | 2700            |
| D 6  | 220           | 80          | 44 208 12 1262 10 | 950                       | 9400            | 1500                     | 5500            |

When applying P+S lift buffers made of Diepocell BM®, please always take note of our operating instructions.

certified according to  
EN 81 - 20 / -50